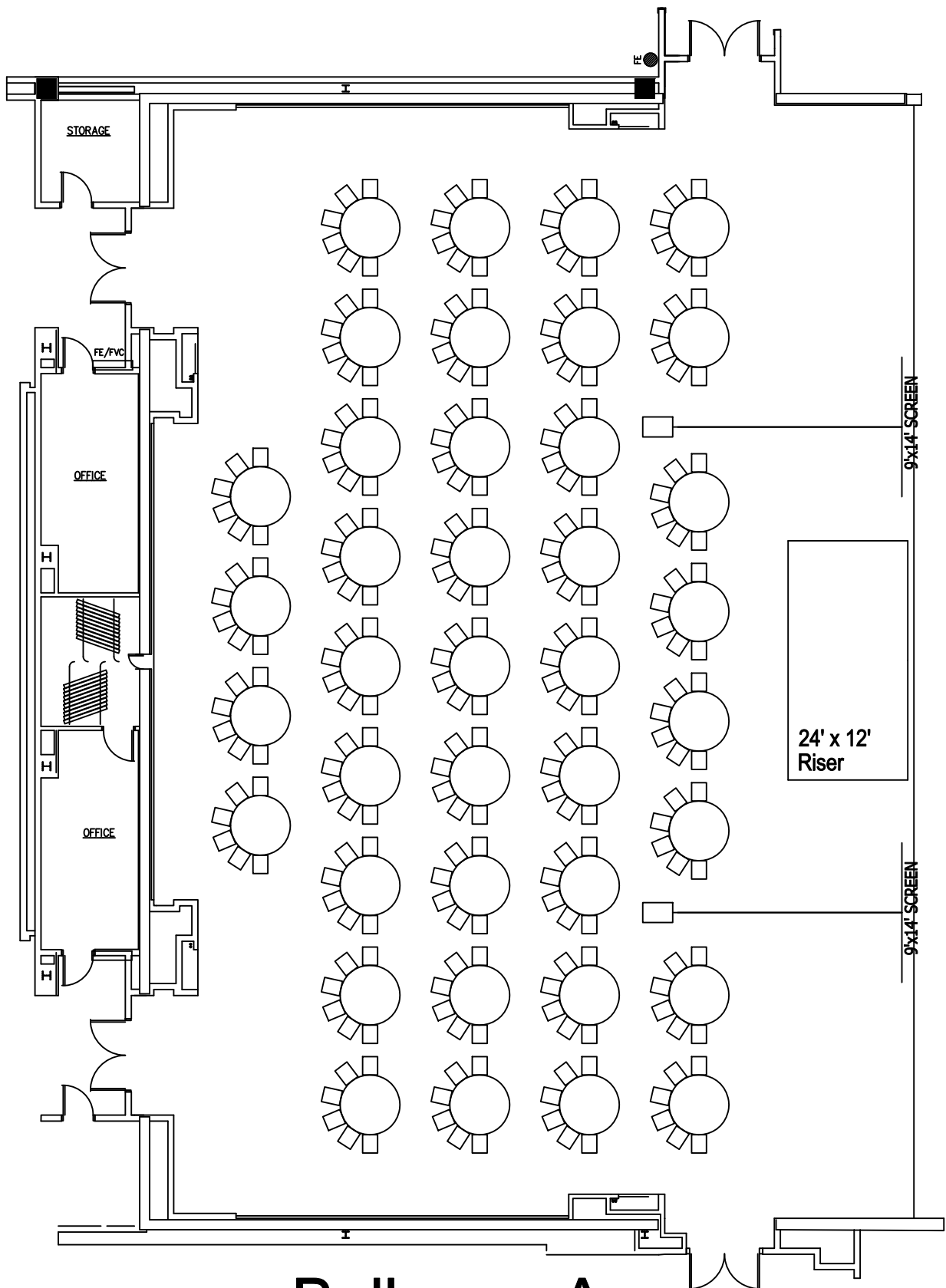
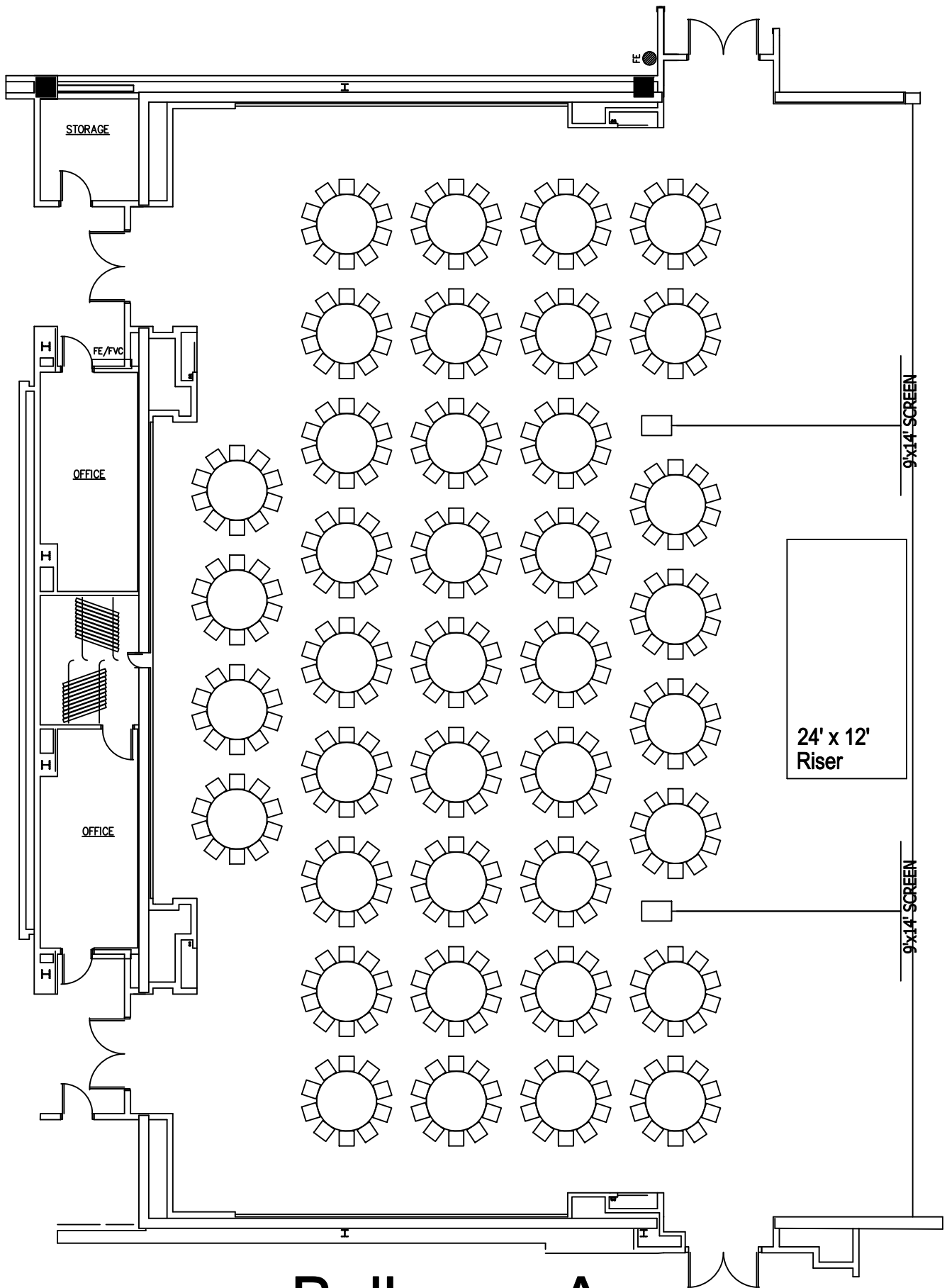


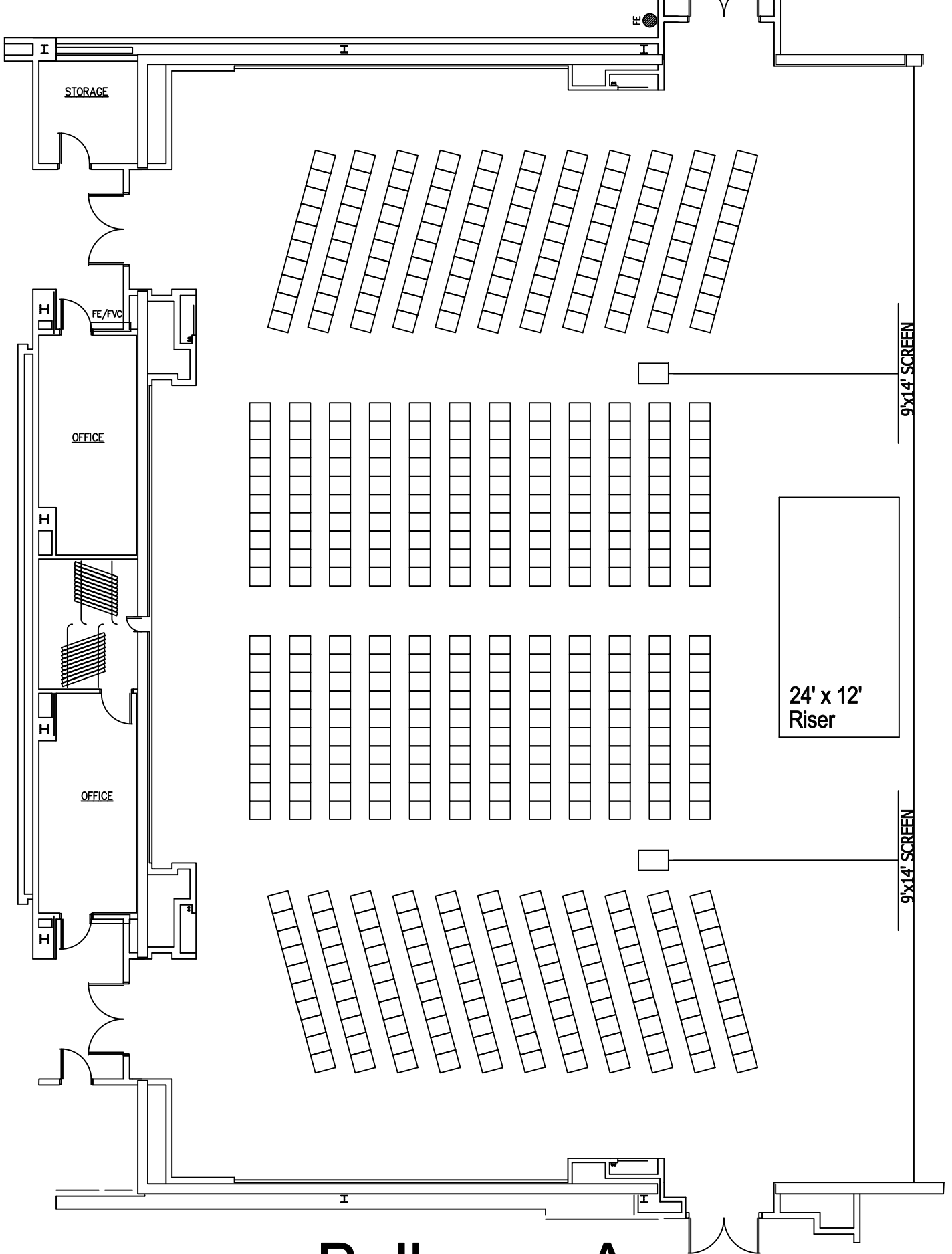
Ballroom A Classroom for 336



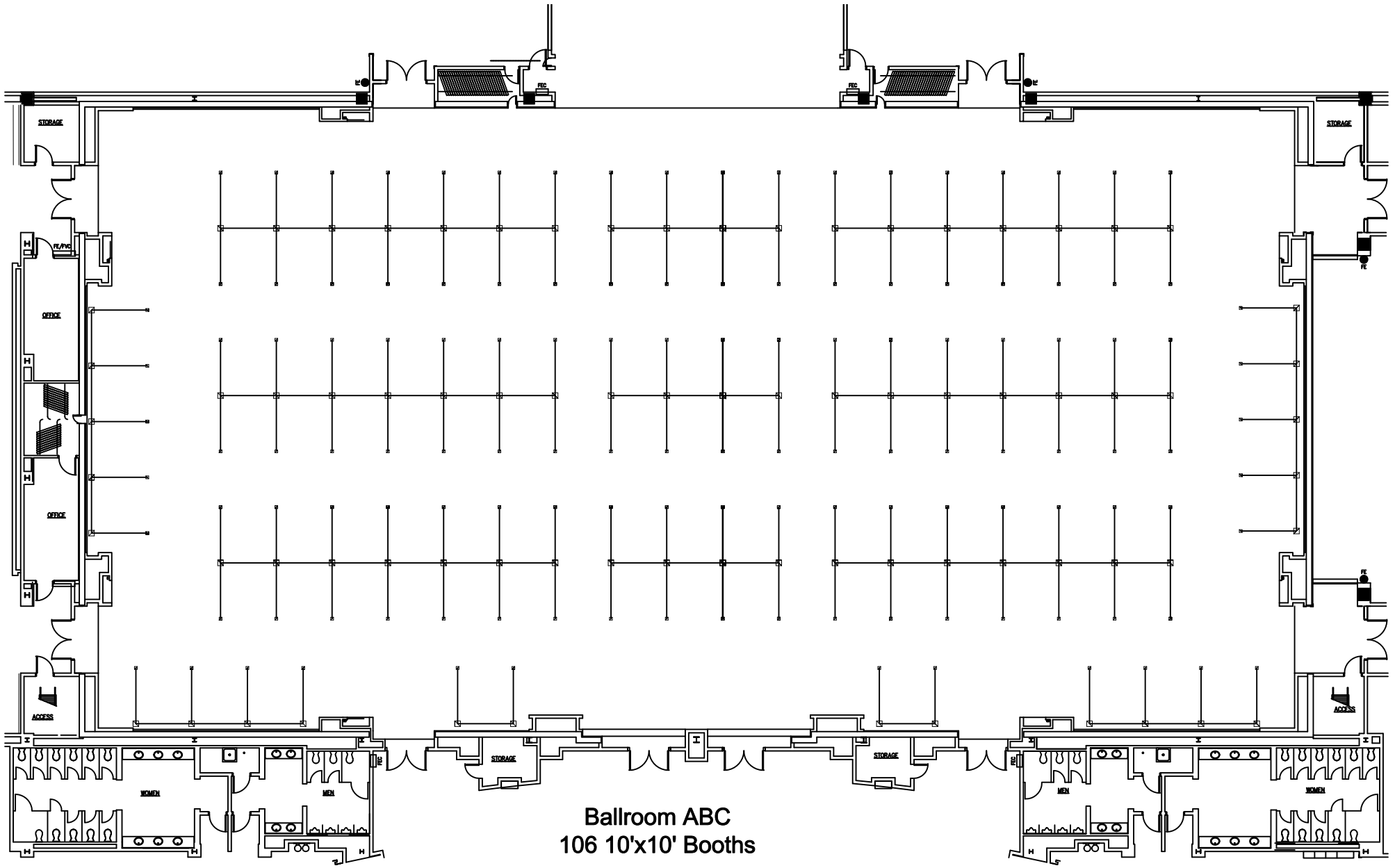
Ballroom A
Crescent Rounds of
6 for 234



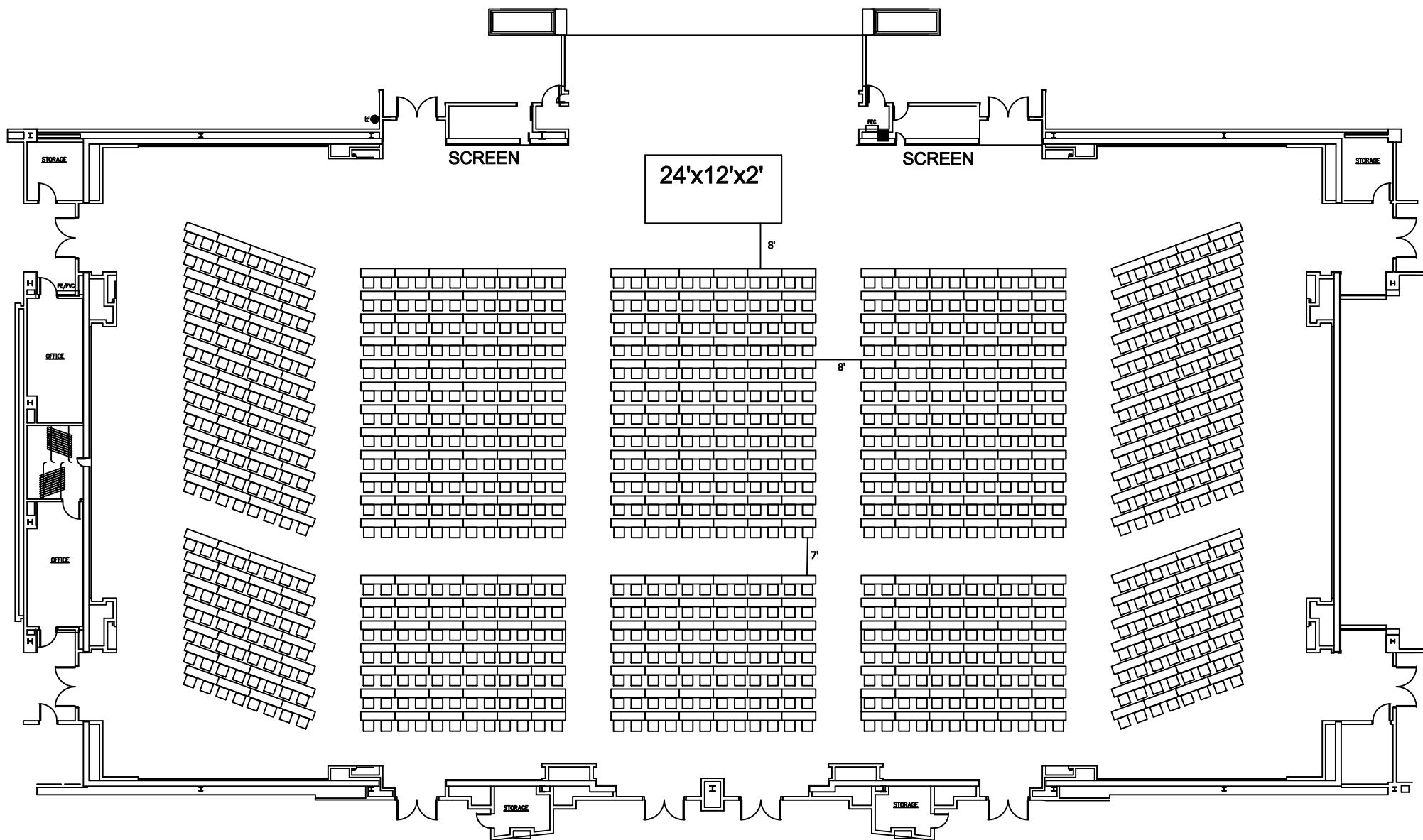
Ballroom A
Rounds of 10 for 390



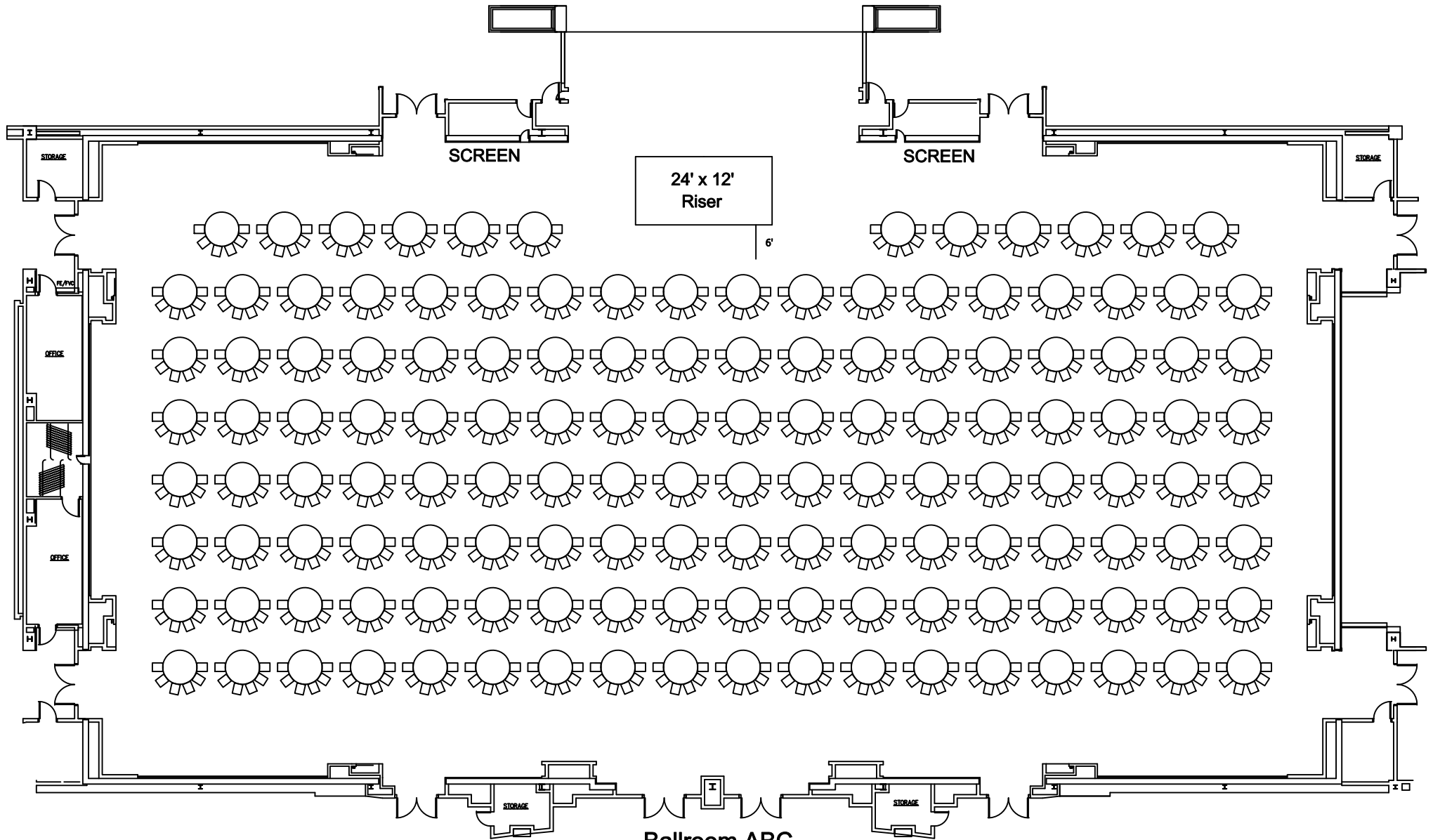
**Ballroom A
Theater for 460**



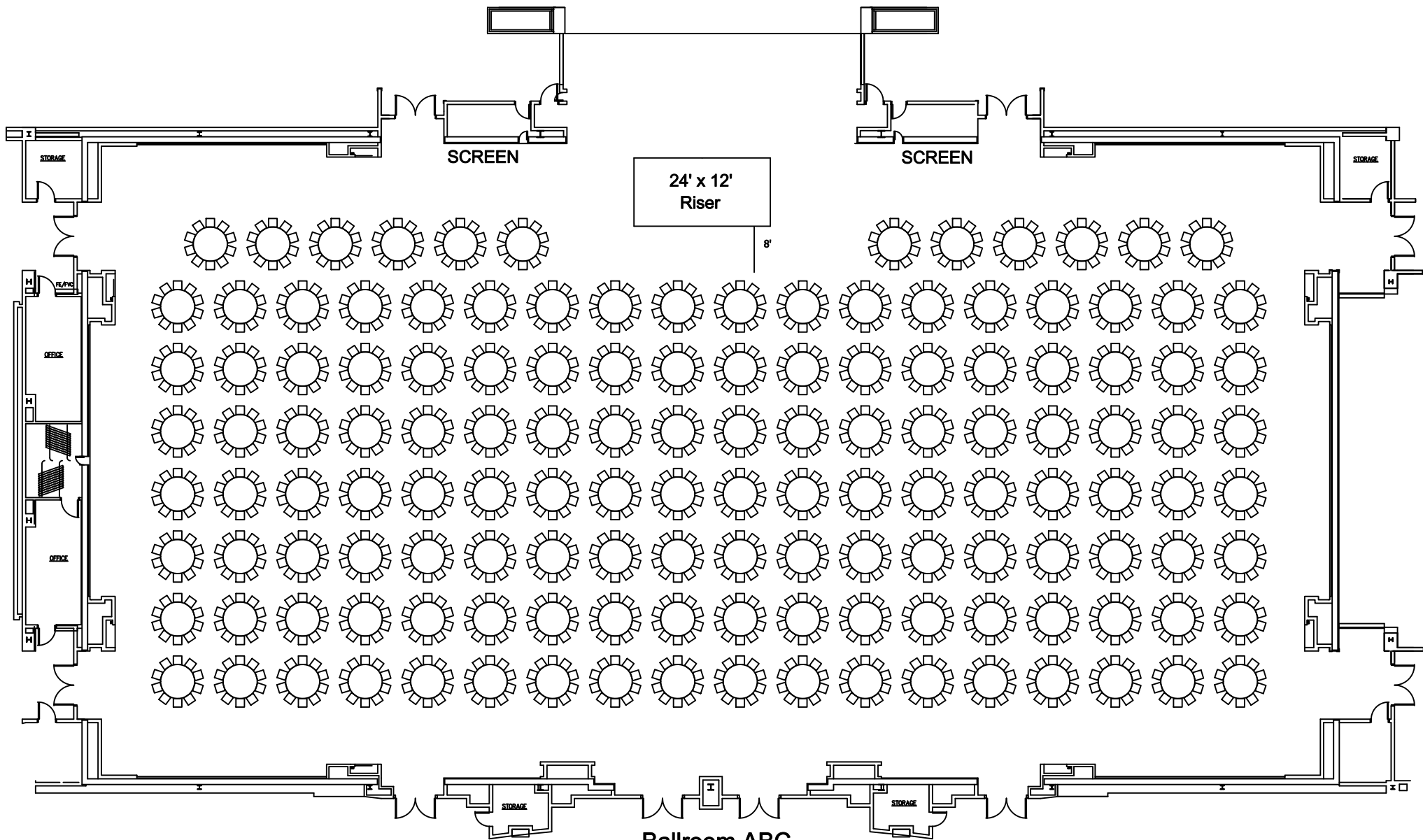
Ballroom ABC
106 10'x10' Booths



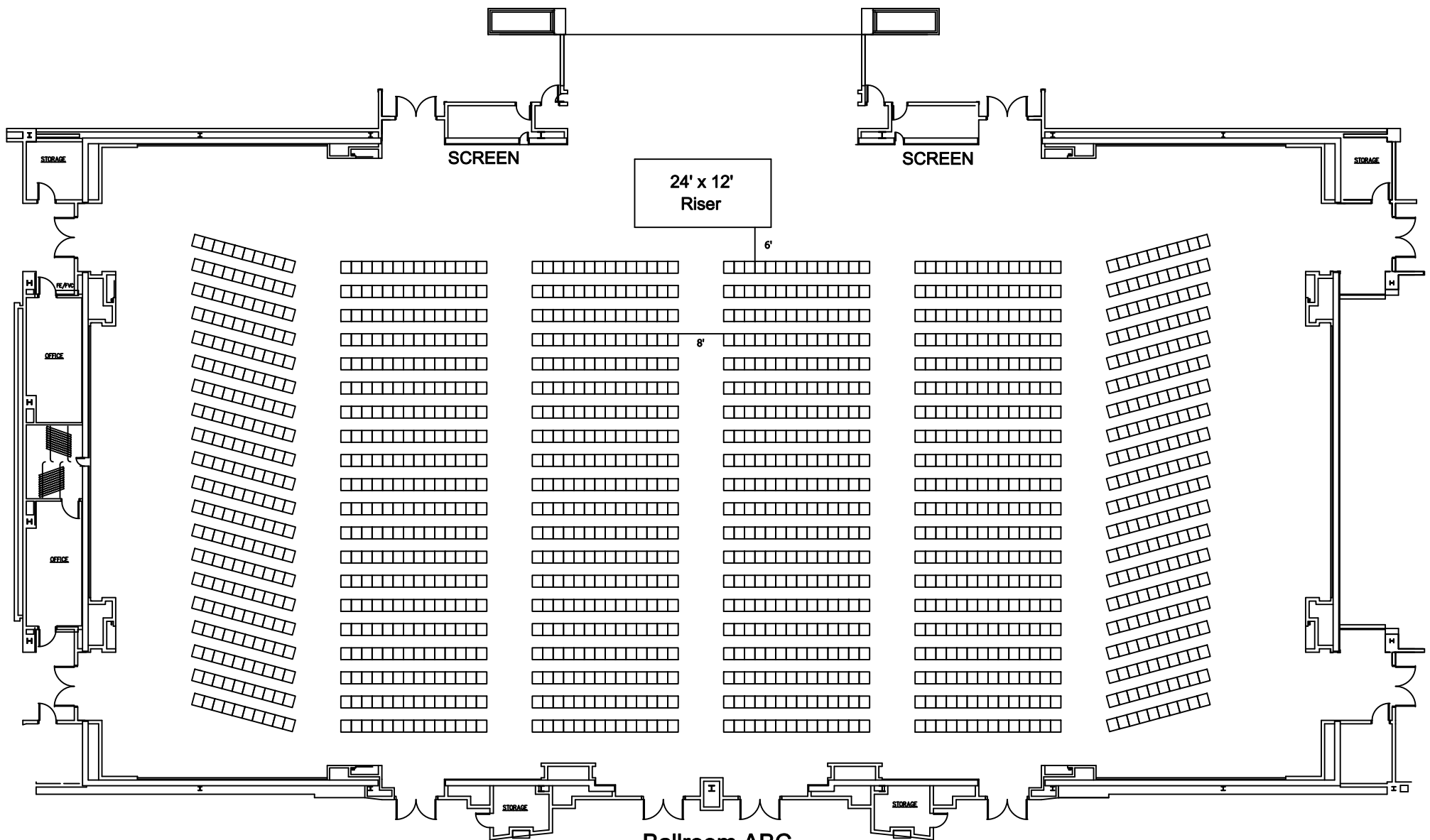
**Ballroom ABC
Classroom for 988**



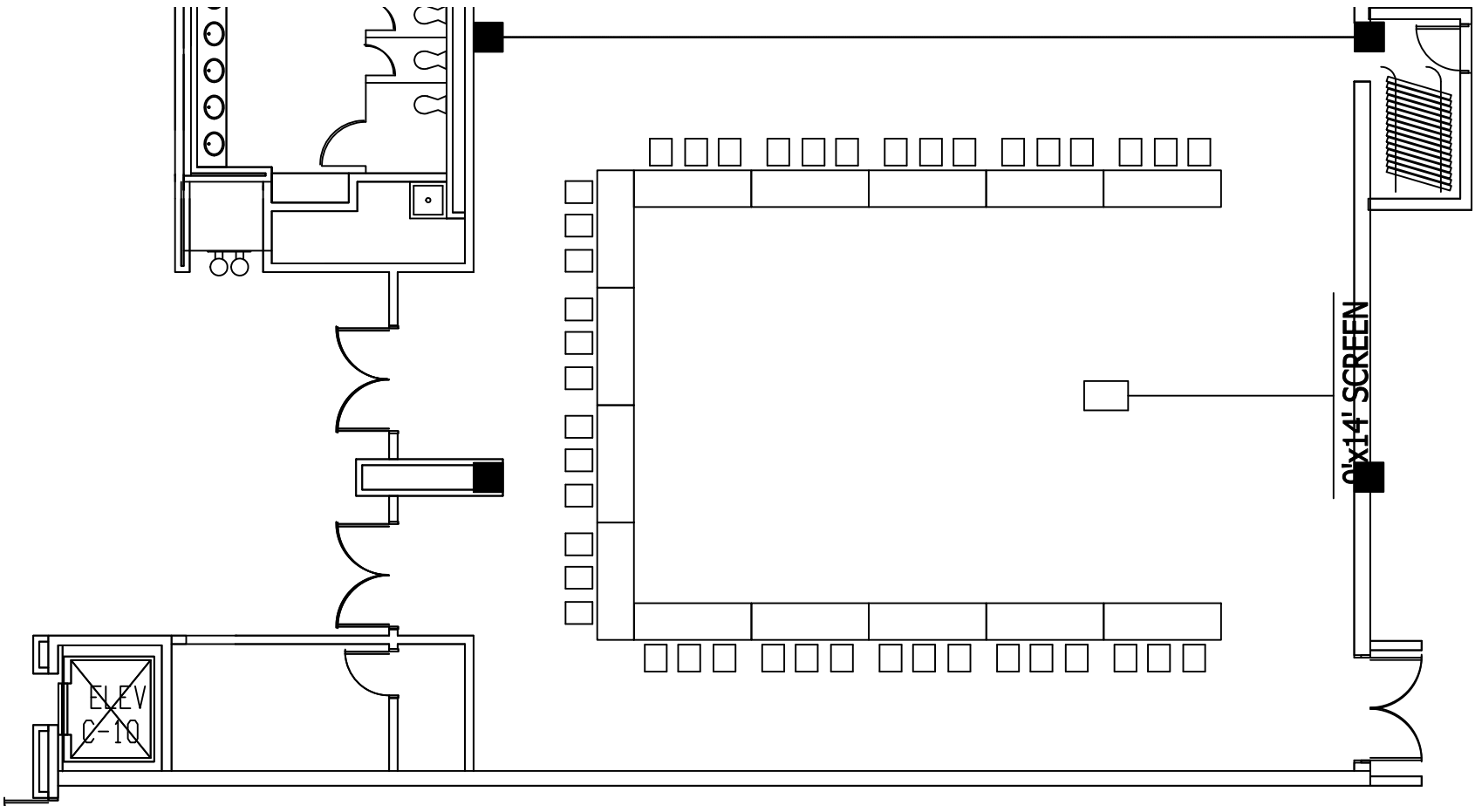
Ballroom ABC
Crescents for 828



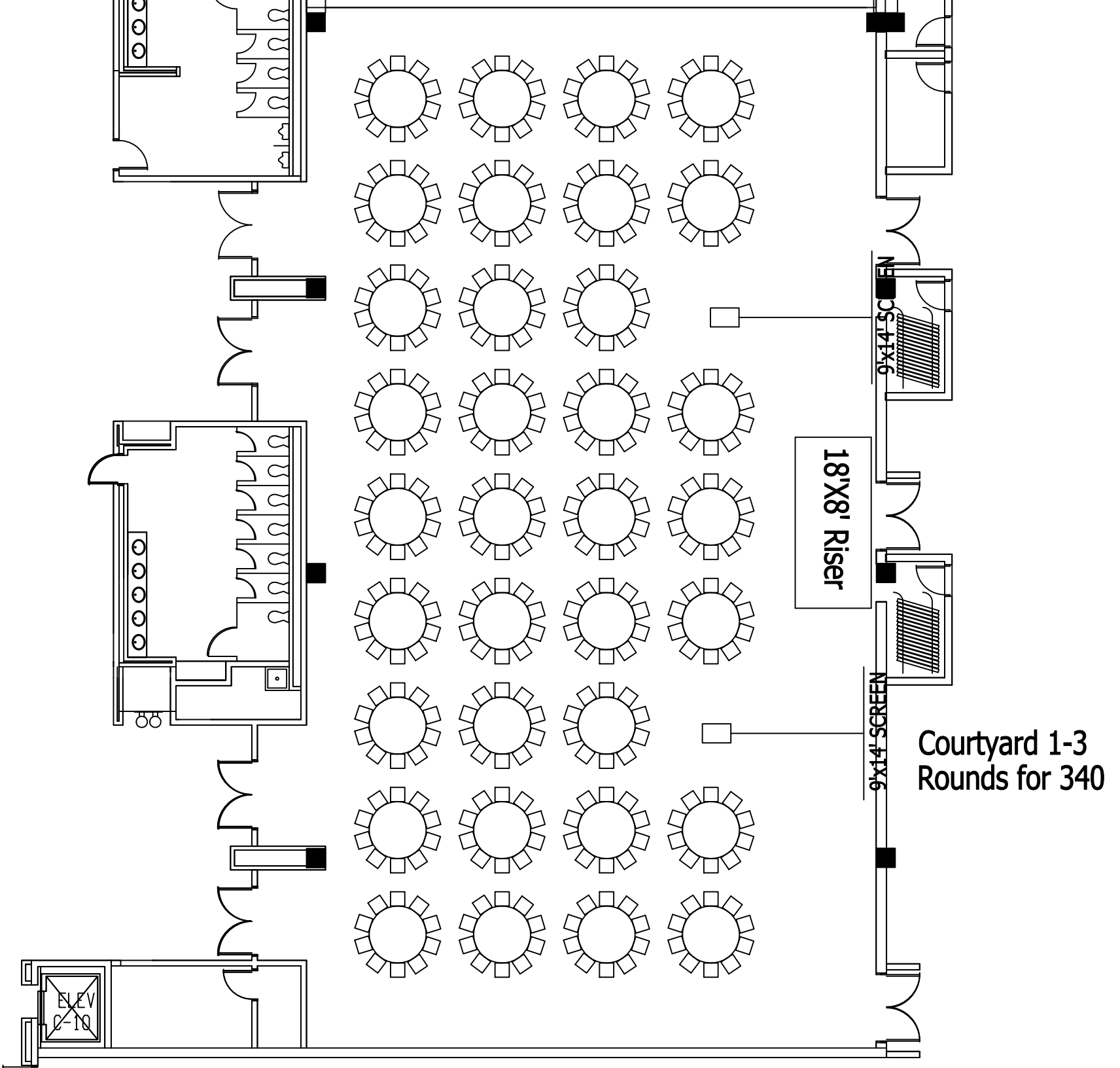
Ballroom ABC
Rounds for 1380

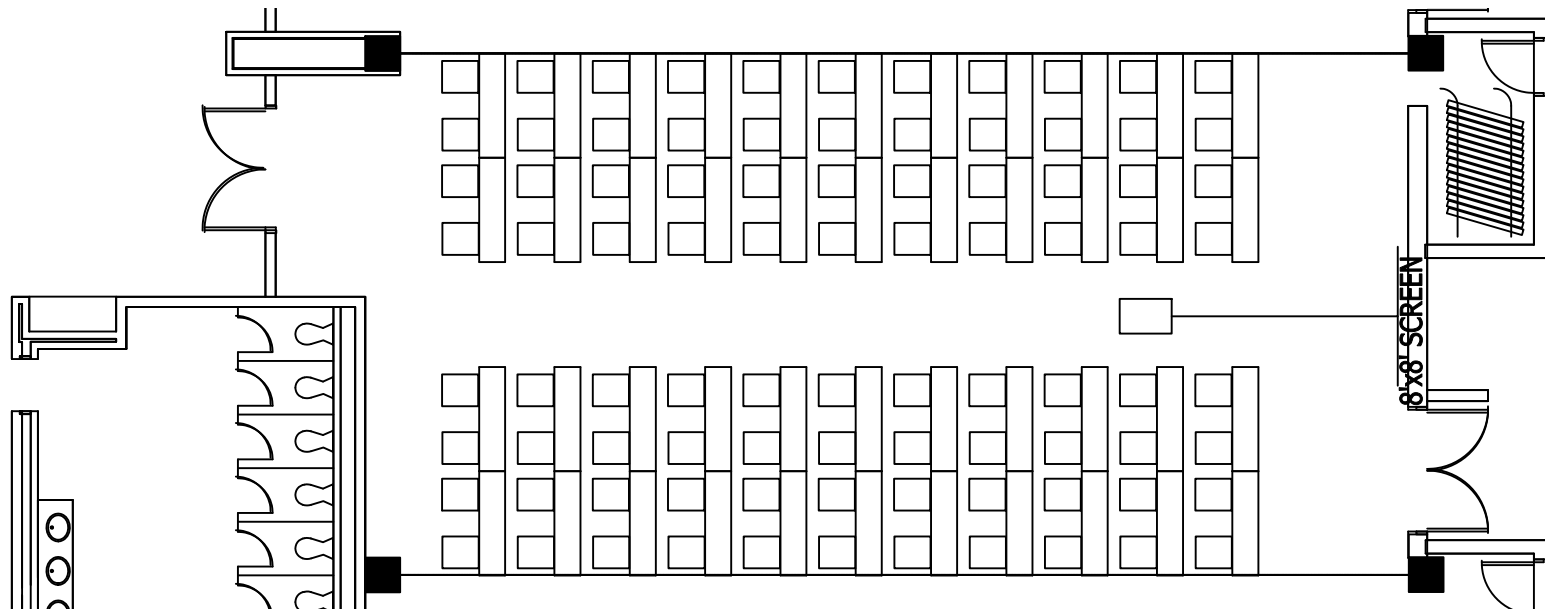


**Ballroom ABC
Theater for 1,520**

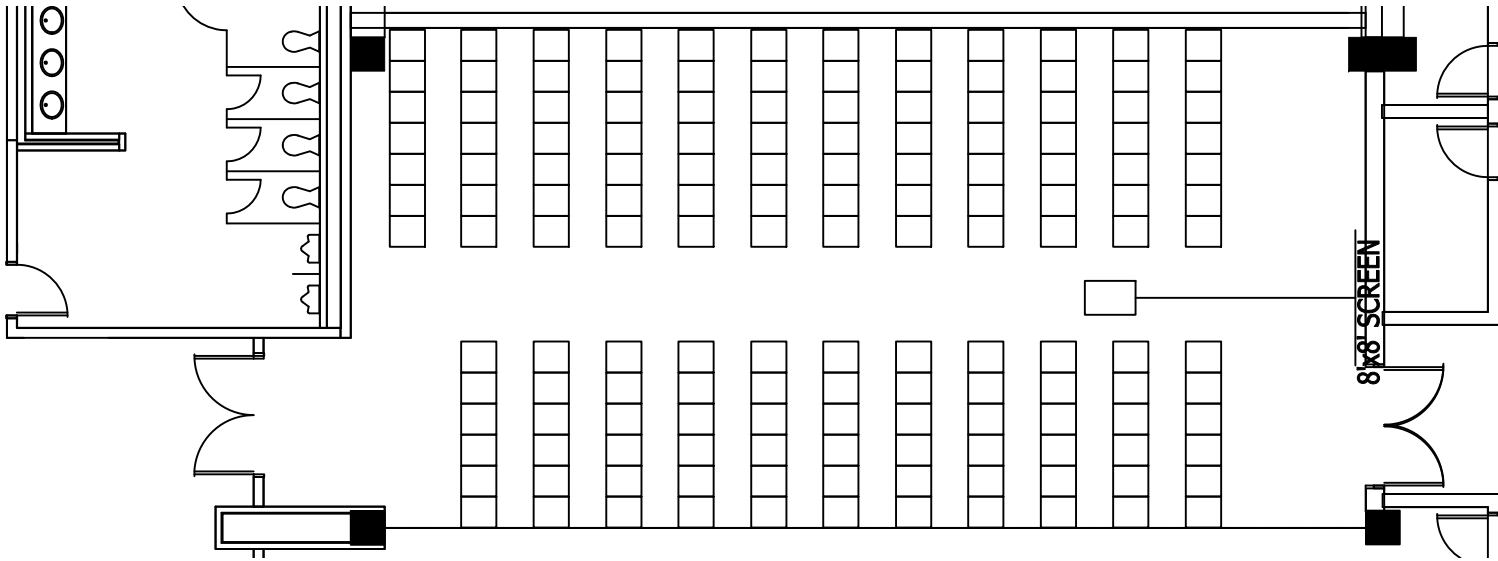


Courtyard 1
U-Shape
for 42

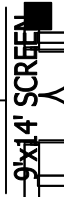
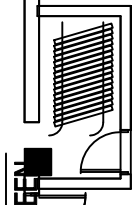
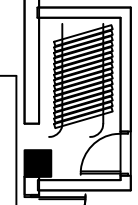
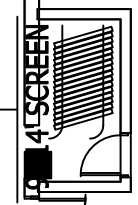
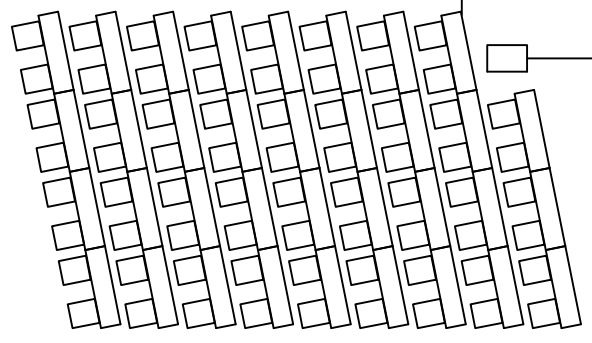
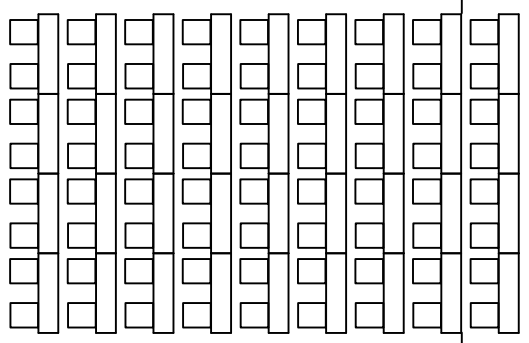
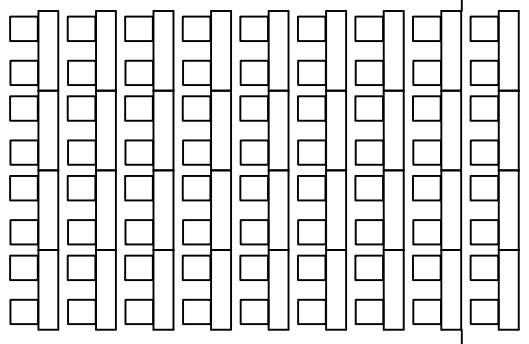
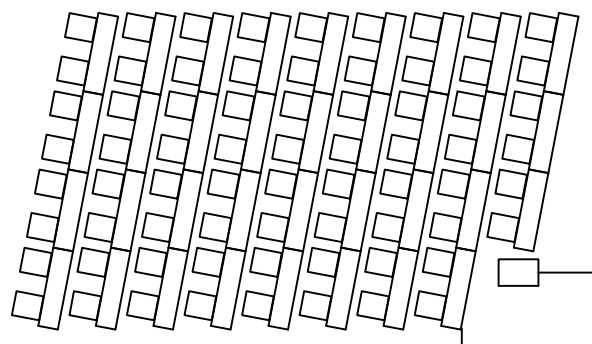
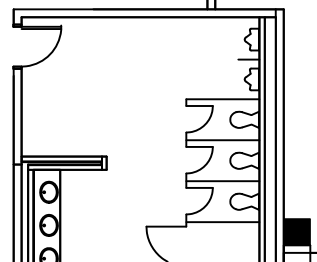
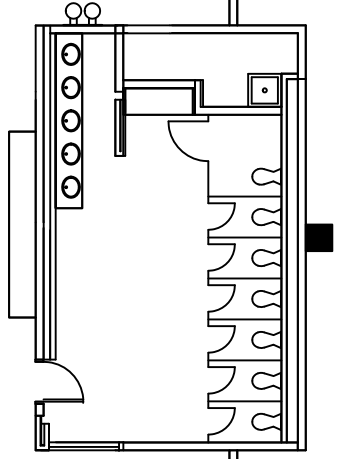
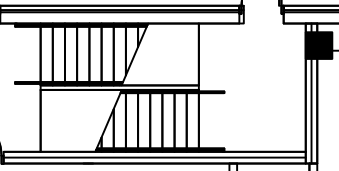




Courtyard 2
Classroom
for 88



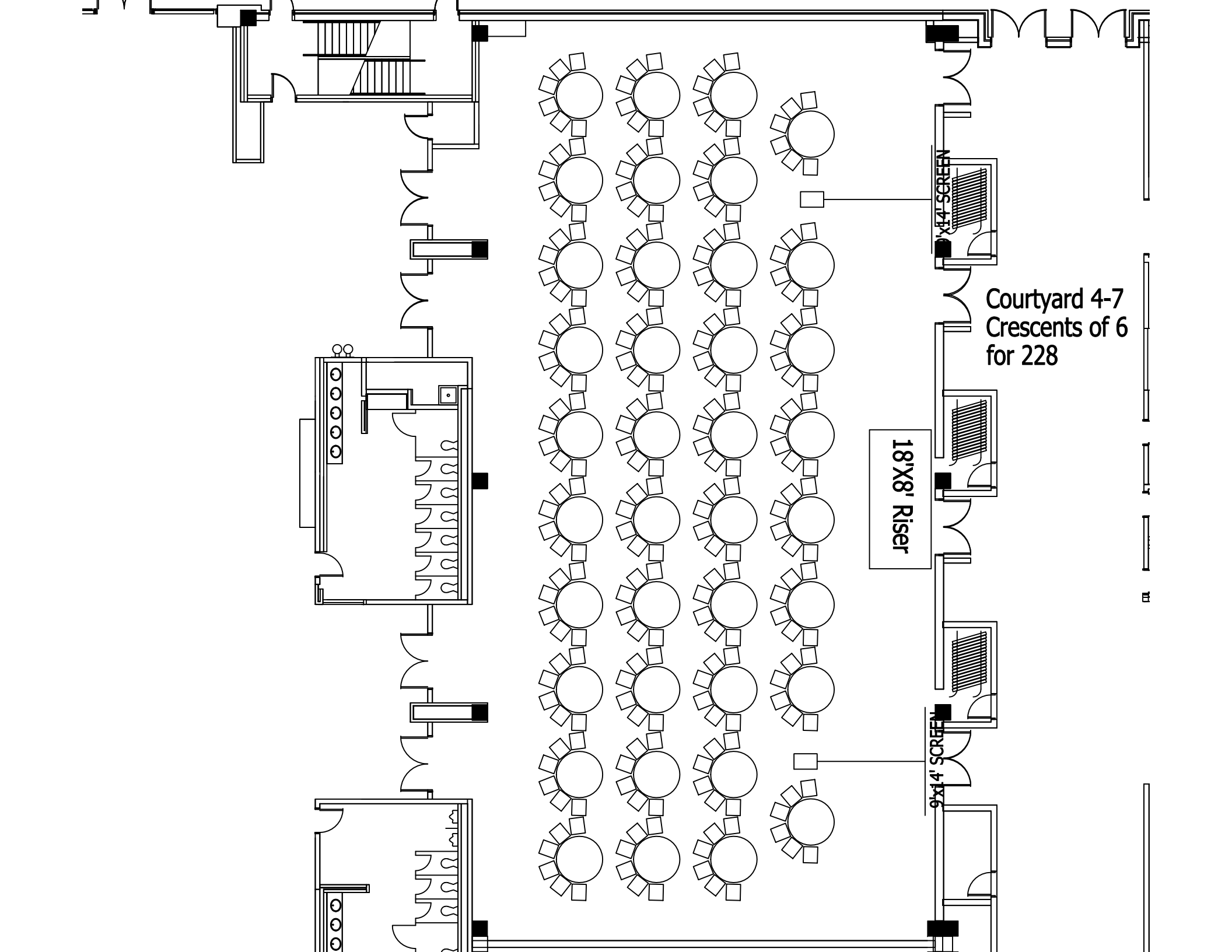
**Courtyard 3
Theatre
for 150**



18'X8' Riser

Courtyard 4-7
Classroom
for 284

E



Courtyard 4-7
Crescents of 6
for 228

18'X8' Riser

9'X14' SCREEN

9'X14' SCREEN

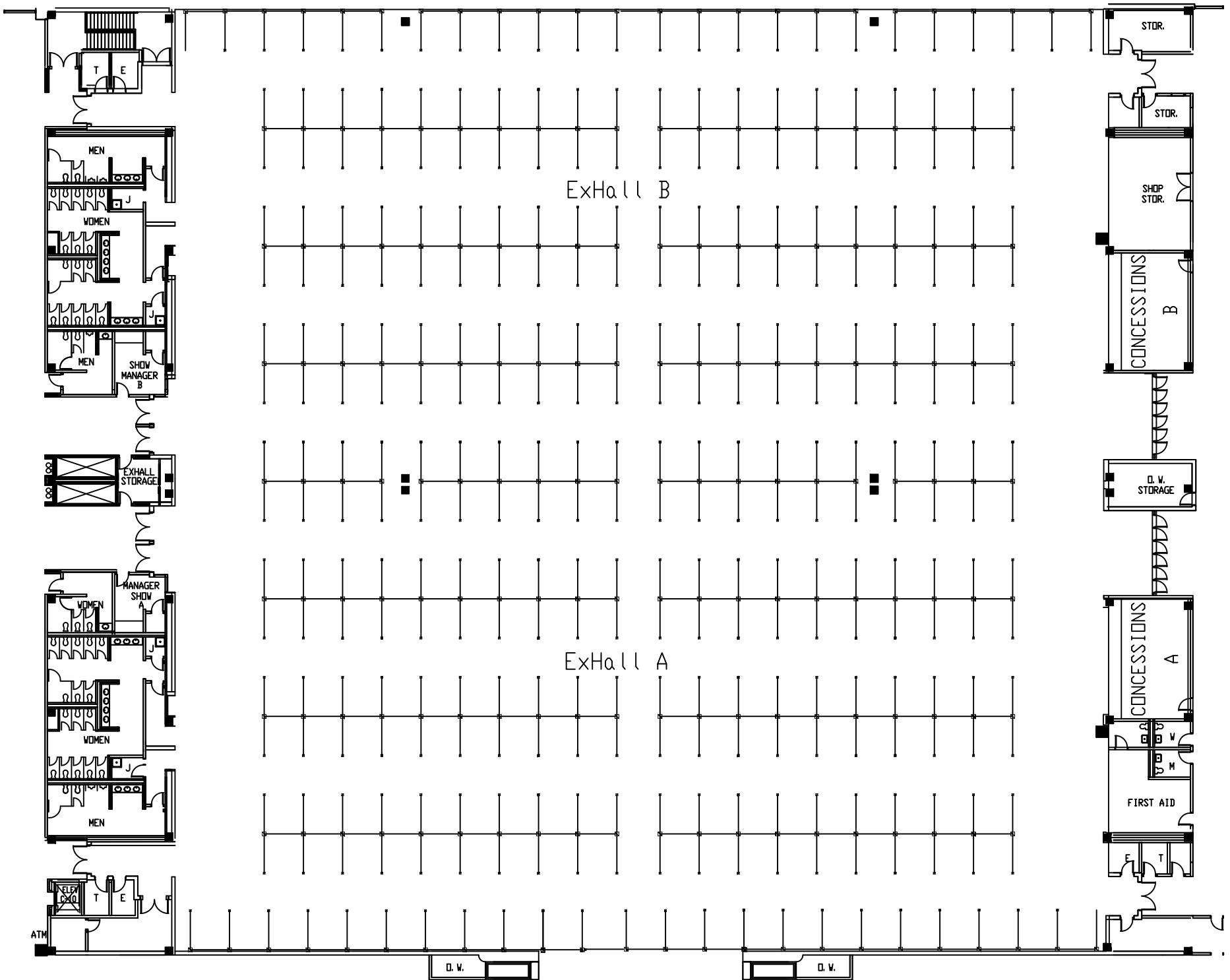


Exhibit Hall
296 10'x10' Booths

Exhibit Hall
Crescents of 6
Seating for 1,704

screen

32'Wx24'Dx4'H

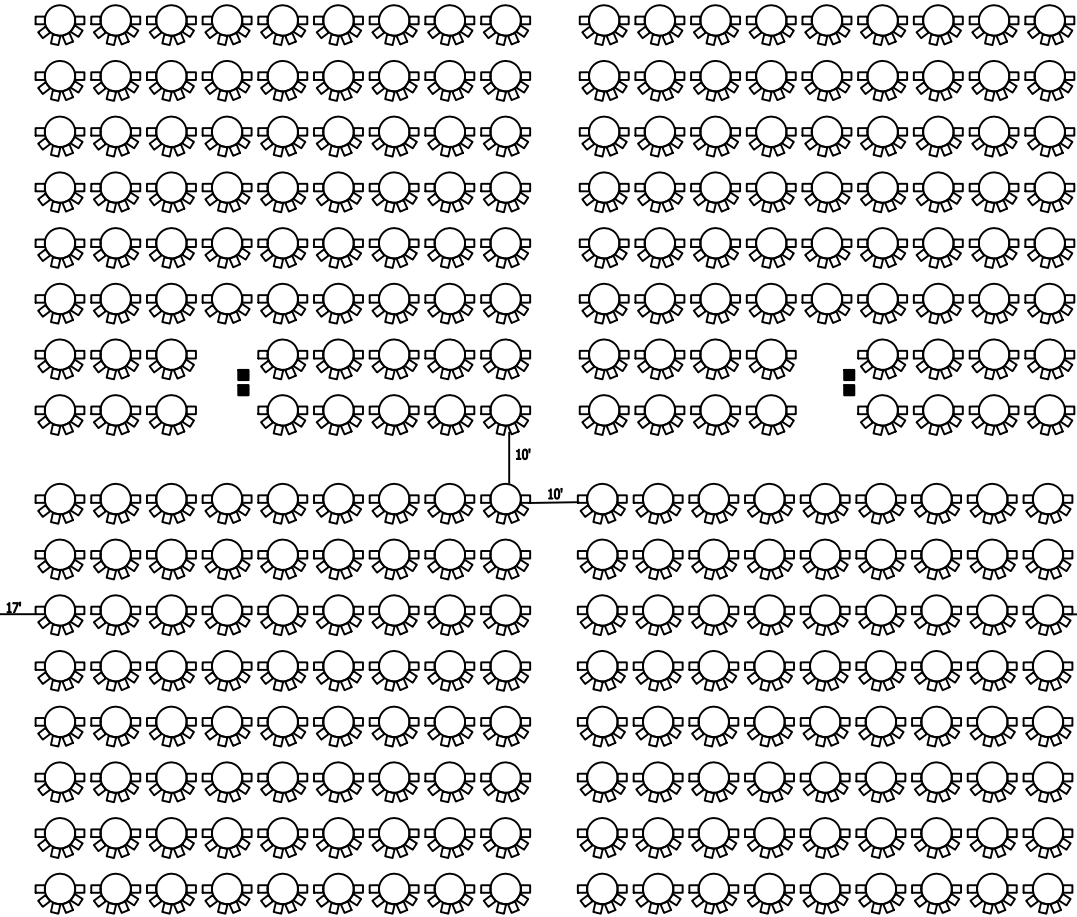
screen

stairs

stairs

ENTRANCE

ENTRANCE



17'

17'

10'

10'

10'

10'

Exhibit Hall
Rounds of 10
Seating for 2,840

screen

32'Wx24'Dx4'H

screen

stairs

stairs

ENTRANCE

ENTRANCE

D.V. STORAGE

D.V. M

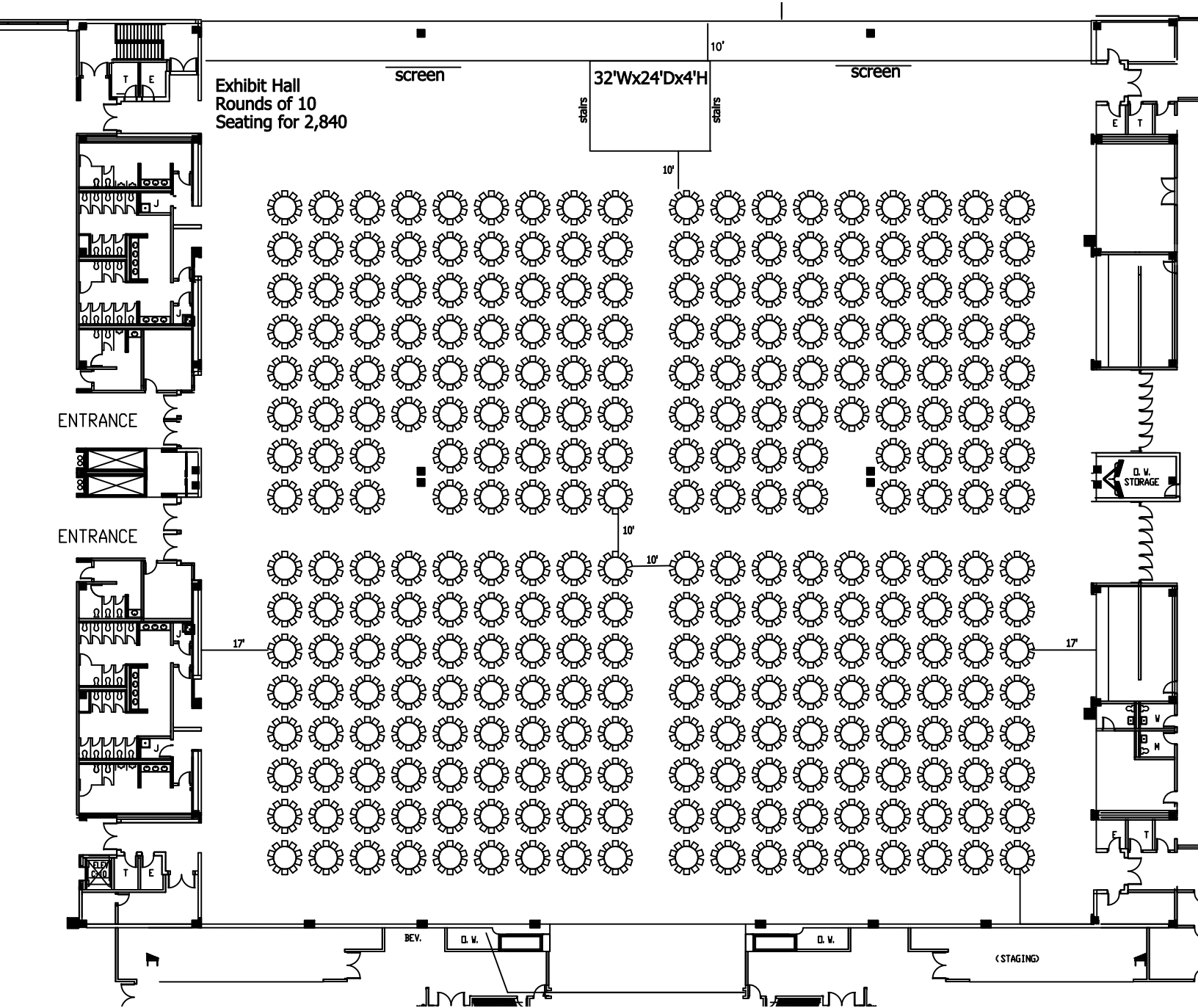
D.V. V

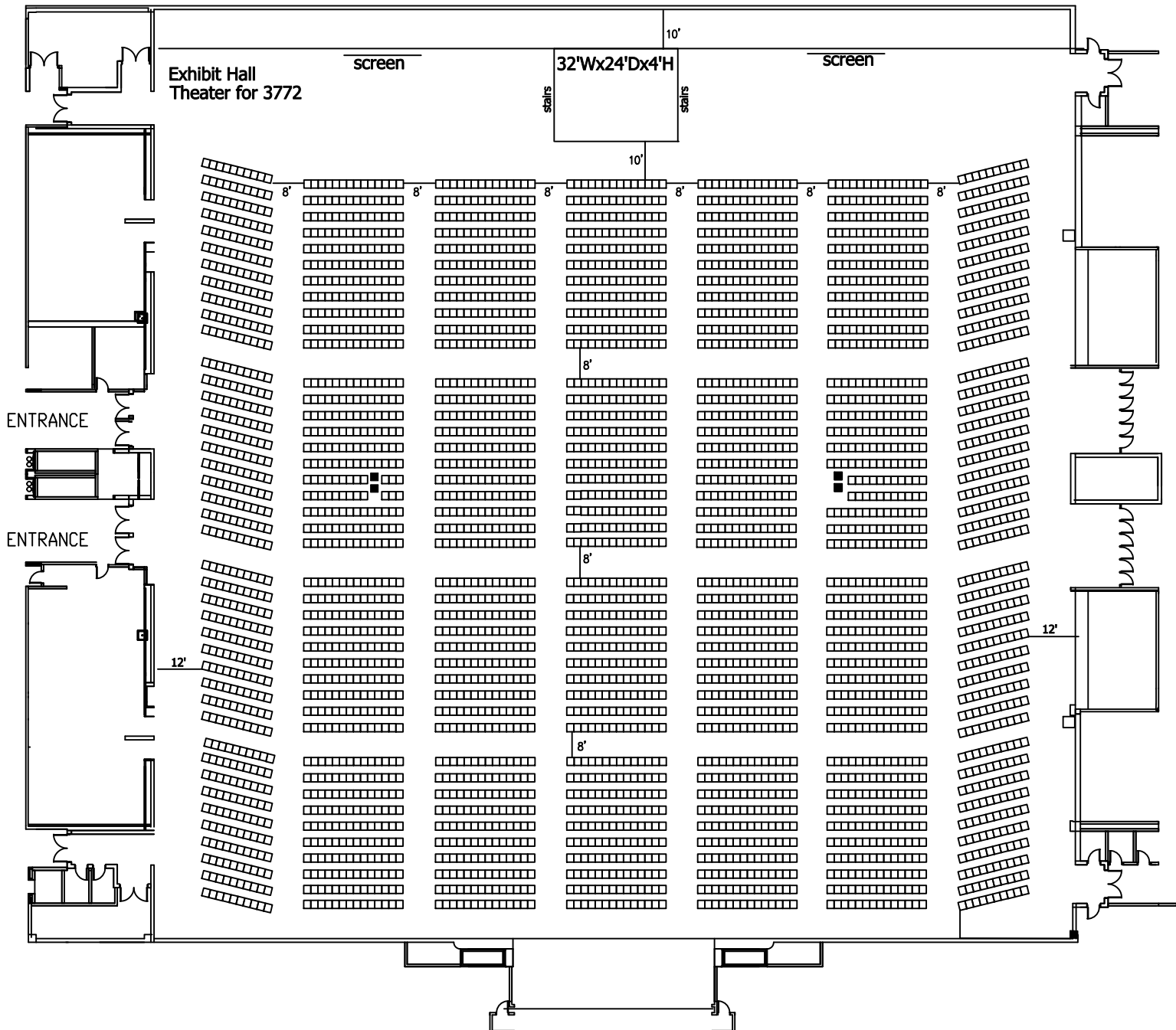
BEV.

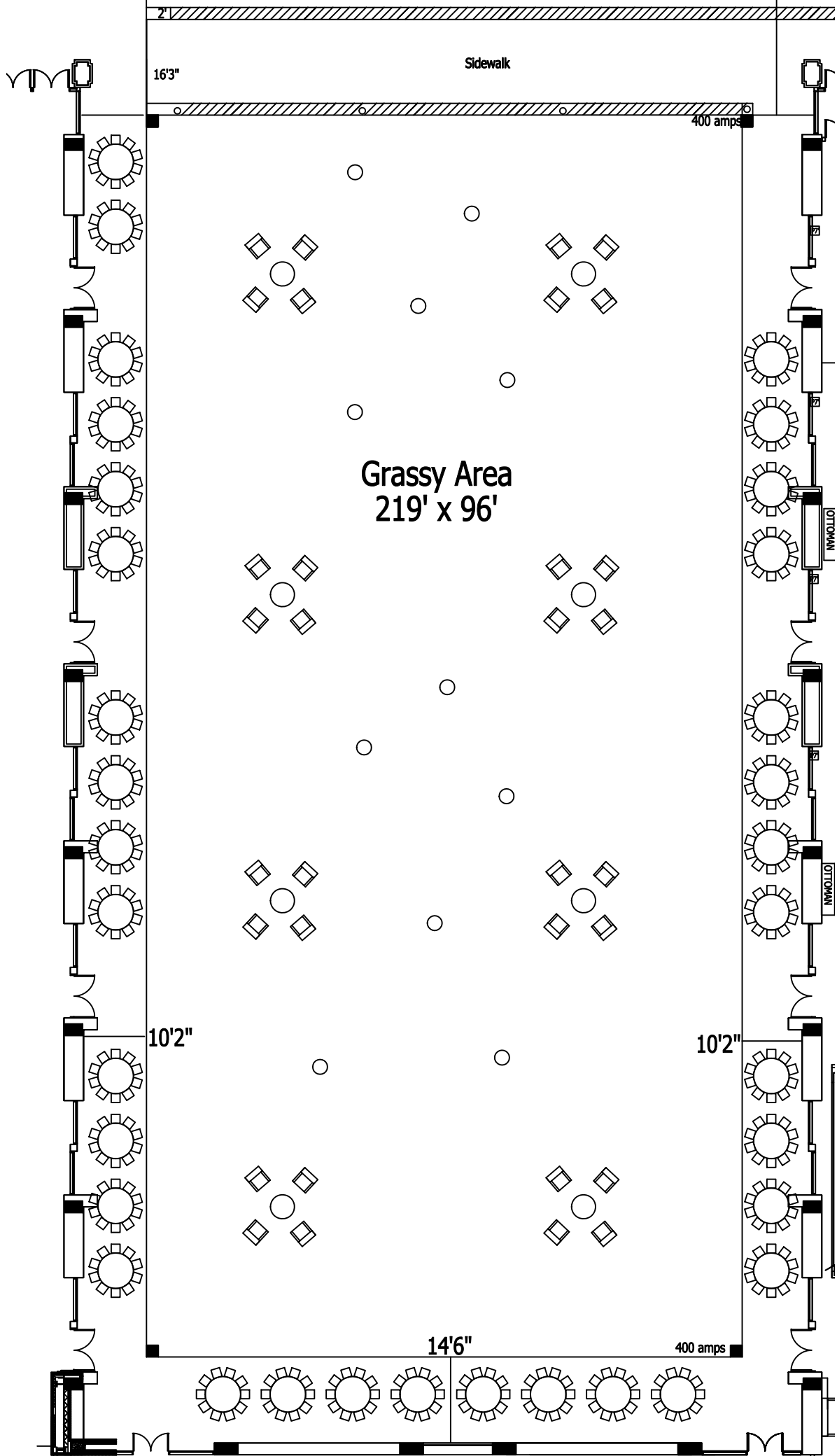
D.V.

D.V.

(STAGING)







16'3"

Sidewalk

400 amps

Grassy Area
219' x 96'

10'2"

10'2"

14'6"

400 amps

OTTOMAN

OTTOMAN

